



Down Street Mews,  
Mayfair, W1J

£2,300 Per Week

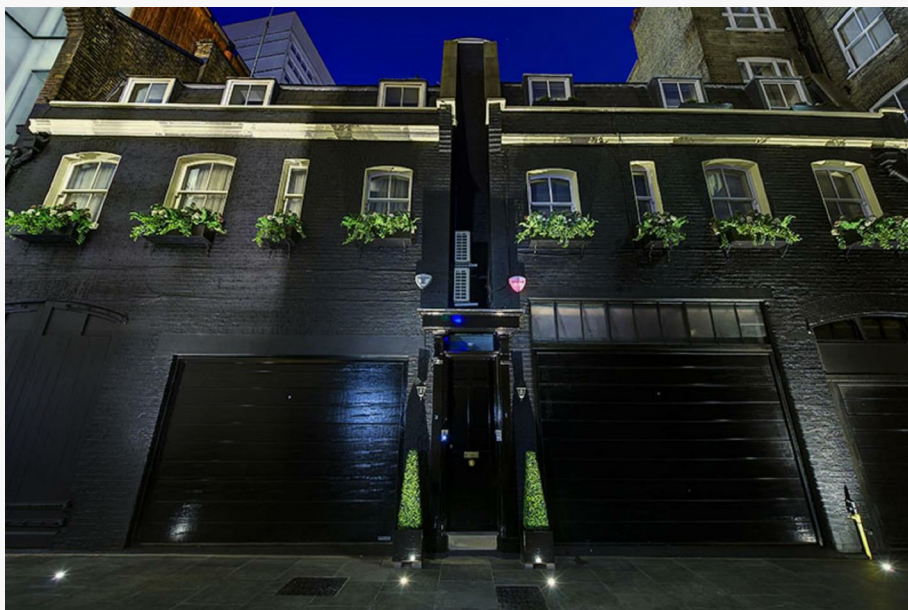
NAPIER WATT

T: 0207 935 0011  
E: [enquiries@napierwatt.co.uk](mailto:enquiries@napierwatt.co.uk)  
W: [napierwatt.co.uk](http://napierwatt.co.uk)

35 Berkeley Square, Mayfair, London, W1J 5BF







## Description

A stunningly refurbished two-bedroom, two-bathroom duplex apartment with air-conditioning, measuring 1,432 sq ft set within secure gated mews moments from Green Park in the heart of Mayfair. The property has been comprehensively renovated by interior designers Secretcape, creating a contemporary living space with stylish features, such as exposed brickwork, wood flooring, and bespoke built-in furniture and fittings throughout. The living room is light and spacious, incorporating a bespoke kitchen and opening onto a private balcony.

2 Bedrooms : 2 Bathrooms : AC : Balcony : Westminster Council Tax Band F : EPC Rating C

## Key Features

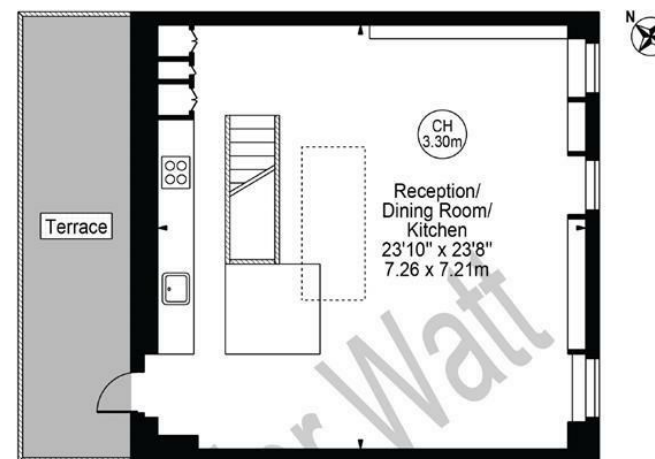
- INTERIOR DESIGNED
- TERRACE
- MAYFAIR
- AIR-CONDITIONING
- GREEN PARK

## Terms

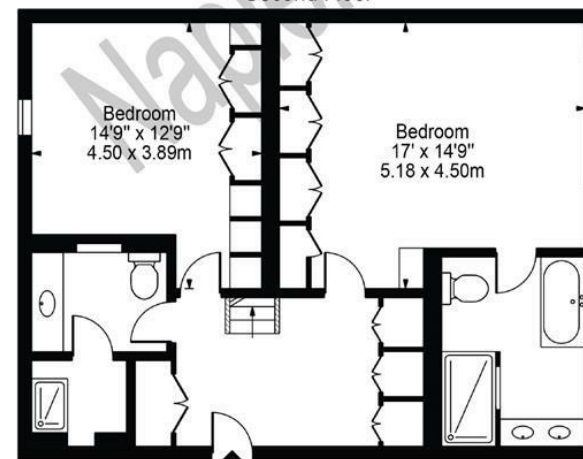
Fees & Charges: Tenancies exceeding £100,000 Per annum £480 inc VAT, Tenancies where a company is a tenant £480 Inc VAT.

## Down Street Mews

Approx. Gross Internal Area 1432 Sq Ft - 133.03 Sq M



Second Floor



First Floor

For Illustration Purposes Only - Not To Scale

This floor plan should be used as a general outline for guidance only and does not constitute in whole or in part an offer or contract. Any intending purchaser or lessee should satisfy themselves by inspection, searches, enquiries and full survey as to the correctness of each statement. Any areas, measurements or distances quoted are approximate and should not be used to value a property or be the basis of any sale or let.

IMPORTANT: We would inform prospective purchasers that these sales particulars have been prepared as a general guide only. A detailed survey has not been carried out, nor the services, appliances and fittings tested. Room sizes should not be relied upon for furnishing purposes and are approximate. If floor plans are included, they are for guidance only and illustration purposes only and may not be to scale. If there are any important matters likely to affect your decision to buy, please contact us before viewing the property.